



**ACCELERATING THE  
GLOBAL SATELLITE  
LAUNCH INDUSTRY**



# Forward Looking Statements

This presentation contains "forward-looking statements" within the meaning of applicable securities laws. All statements contained herein that are not clearly historical in nature may constitute forward-looking statements.

Generally, such forward-looking information or forward-looking statements can be identified by the use of forward-looking terminology such as "plans", "expects" or "does not expect", "is expected", "budget", "scheduled", "estimates", "forecasts", "intends", "anticipates" or "does not anticipate", or "believes", or variations of such words and phrases or may contain statements that certain actions, events or results "may", "could", "would", "might" or "will be taken", "will continue", "will occur" or "will be achieved". The forward-looking information and forward-looking statements contained herein include, but are not limited to, statements regarding: the ability of the Company to fulfill the listing requirements of the Exchange and obtain final listing approval, the filing of prospectus-level disclosure of the Company on SEDAR, the proposed services and clients of the Company, and the expected industry growth of the global aerospace economy.

Forward-looking statements in this presentation are based on certain assumptions and expected future events, namely: the Company's ability to continue as a going concern; the Company's ability to continue to develop revenue-generating applications; continued approval of the Company's activities by the relevant governmental and/or regulatory authorities; the continued growth of the Company; the Company's ability to finance its operations until profitability can be achieved and sustained; and the ability of the Company to fulfil the listing requirements of the Exchange.

These statements involve known and unknown risks, uncertainties and other factors, which may cause actual results, performance or achievements to differ materially from those expressed or implied by such statements, including but not limited to: the potential inability of the Company to continue as a going concern; risks associated with potential governmental and/or regulatory action with respect to the Company's operations; the inability of the Company to provide the enumerated services; and the risks associated with the Company's ability to meet the Exchange's listing guidelines.

Readers are cautioned that the foregoing list is not exhaustive. Readers are further cautioned not to place undue reliance on forward-looking statements, as there can be no assurance that the plans, intentions or expectations upon which they are placed will occur. Such information, although considered reasonable by management at the time of preparation, may prove to be incorrect and actual results may differ materially from those anticipated.

Forward-looking statements contained in this presentation are expressly qualified by this cautionary statement and reflect the Company's expectations as of the date hereof and are subject to change thereafter. The Company undertakes no obligation to update or revise any forward-looking statements, whether as a result of new information, estimates or opinions, future events or results or otherwise or to explain any material difference between subsequent actual events and such forward-looking information, except as required by applicable law.

# COMMERCIAL SATELLITE LAUNCH FROM CANADA



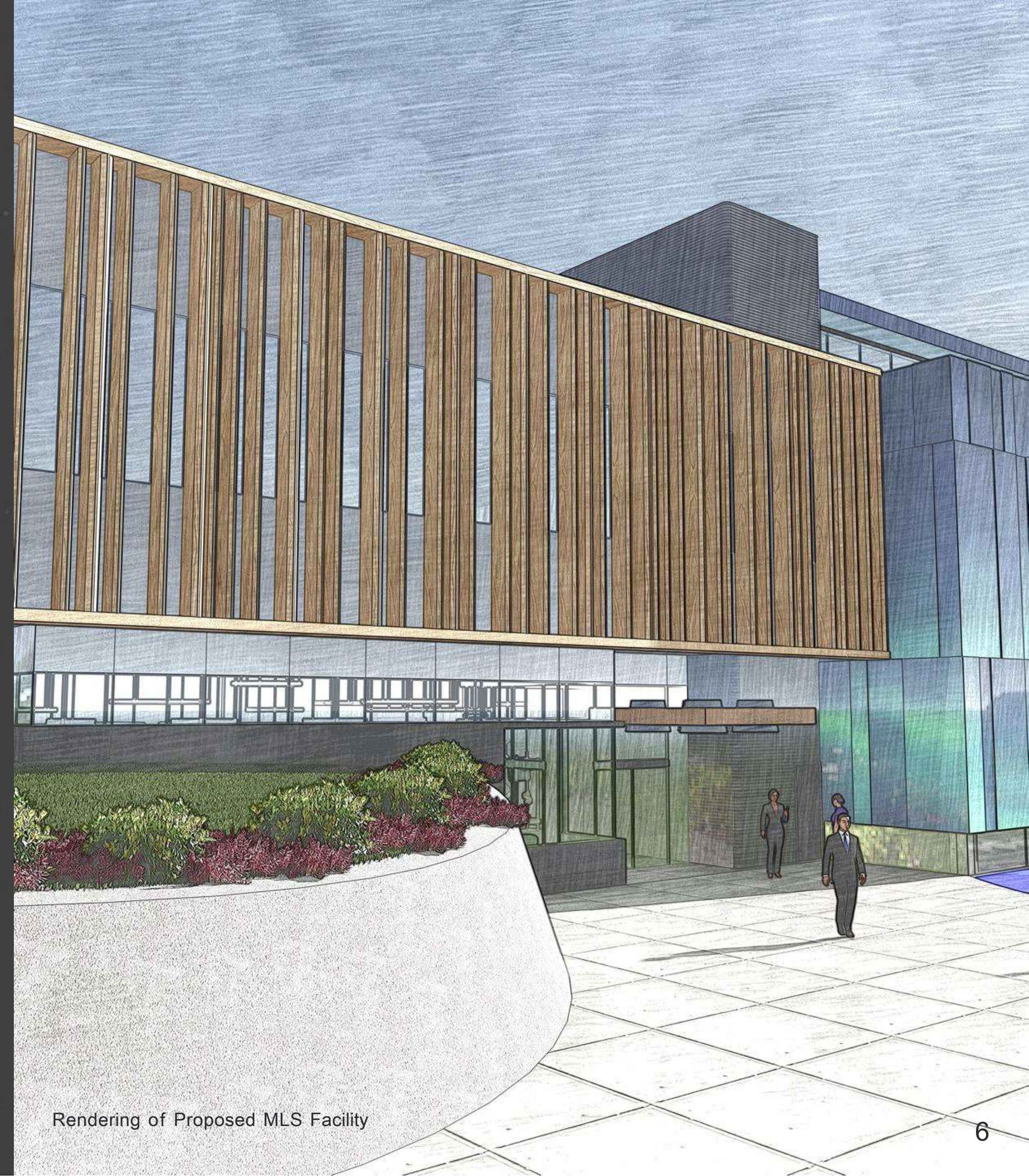


# THE OPPORTUNITY

The **global space economy** is booming with an estimated **value of \$1T by 2040**, and the commercial satellite industry is driving this growth. Satellite and launch vehicle companies are demanding **access** to viable spaceports in North America because they **need more flexibility** than what government installations are able to offer.

**Maritime Launch** is a Canadian-owned commercial space company based in Nova Scotia. With the only dedicated planned **commercial launch site in North America**, we are poised to disrupt the global launch market by offering our clients the largest range of launch inclinations on the continent coupled with a technically mature and reliable launch vehicle capable of carrying 5 tons of cargo to low earth orbit.

**We intend to deliver the solution our customers need – safe, reliable, affordable and strategically located space launch on their schedule.**



Rendering of Proposed MLS Facility



# MARITIME LAUNCH STRENGTHS

## **Commercial Launch Site**

Our privately owned spaceport is designed to allow complete control over launch scheduling which provides clients with much needed flexibility

## **Launch Inclinations**

Our site is intended to provide a wide range of preferred launch inclinations including Polar/Sun Sync Orbits with a large expanse of ocean in the launch direction

## **Multiple Launch Pads**

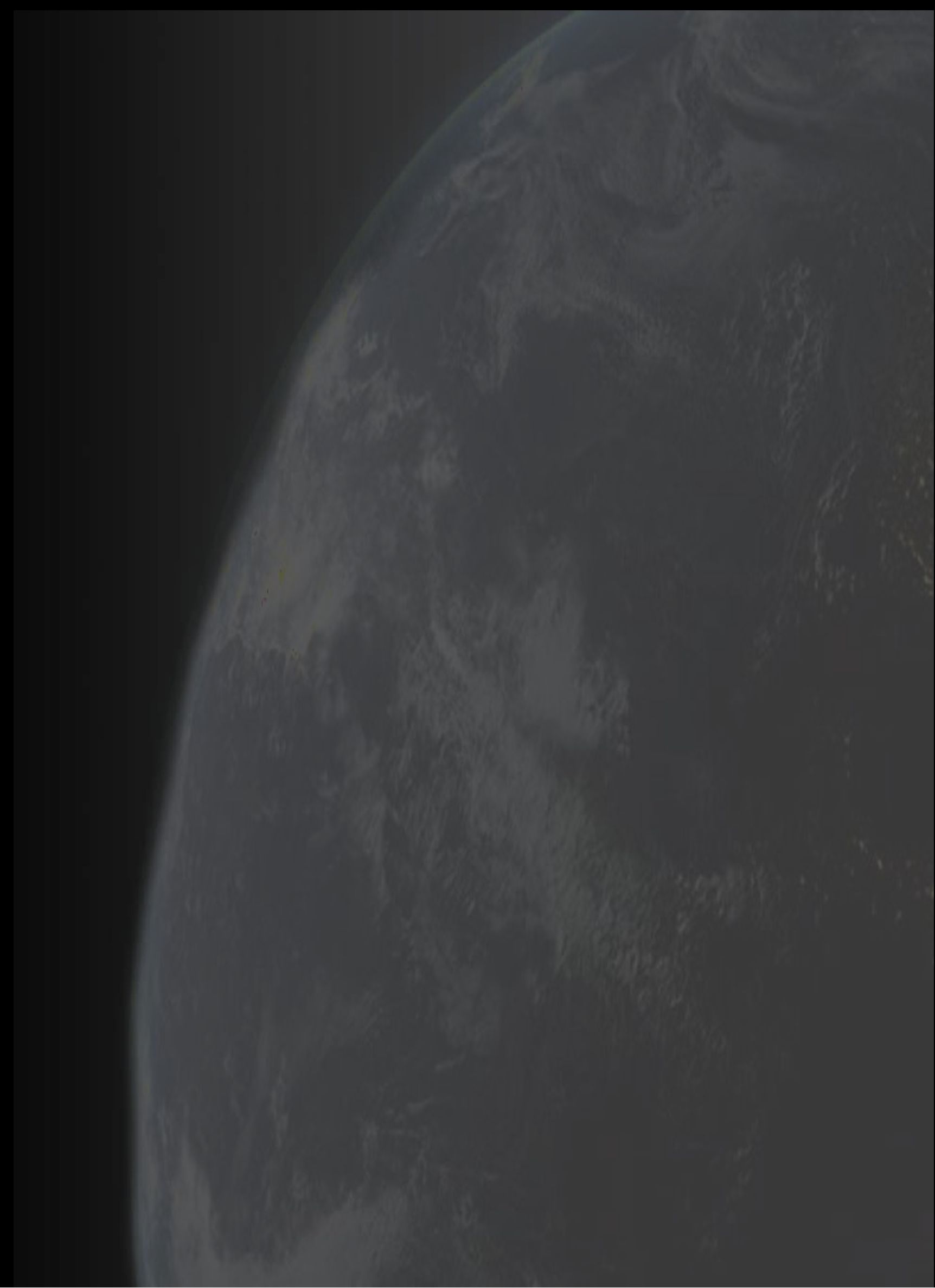
The site layout and size can accommodate multiple launch vehicle developments

## **North American Location**

Our Canadian location provides a high degree of predictability, security, and access to many of the world's most innovative space companies

## **Satellite Clients**

We have a substantial pipeline of opportunities with numerous satellite clients, aggregators, service providers and are collaborating on vertical integration



# STRENGTHS (cont'd)

## **Viable Spaceport Location**

Nearby deep seaport, rail, international airport, power, water, universities, skilled workforce, and a highly attractive tourist destination

## **Right Sized Launch Vehicle**

The medium class launch vehicle is optimized for the constellation market with a 5000 kg capacity, 4-meter fairing and multiple in-orbit upper stage restart capability

## **Low Technical Risk**

Maritime Launch's principal offering is via a legacy supplier with over 878 successful launches and more than 400 payloads delivered to space over 65 years

## **Other Launch Vehicles**

Maritime Launch is evaluating opportunities with multiple other recognized launch vehicle developers for use at Spaceport Nova Scotia

## **Competitive Price per Kg**

Expected pricing of \$9K USD/Kg to LEO





# MARKET OPPORTUNITY

## Spaceport

### Market challenge:

- Few companies have their own launch sites, forcing a reliance on government ranges that offer little flexibility or prioritization
- ▶ Current spaceport locations cause increased logistical costs and difficulty
- ▶ Existing launch inclinations are quite limited

### How we solve this challenge:

- ▶ We will provide full control over launch schedules allowing for more flexible and controlled programs
- ▶ We offer a strategic geographic advantage in the northern hemisphere
- ▶ We provide a wide range of inclinations and launch sites for Polar and Sun Sync Orbits



Rendering of Proposed MLS Facility





# MARKET OPPORTUNITY

## Launch Vehicle

- ▶ Spaceport Nova Scotia is uniquely positioned to serve the medium launch vehicle market
- ▶ The satellite market has shifted away from large satellites in geostationary orbit to small satellites in LEO inclinations
- ▶ Constellation concepts require a diversity of launch service providers to spread launch schedule risks
- ▶ Constellation developers can't depend on competitors to launch their satellites
- ▶ As new constellations complete initial deployment, extensive replacement satellite fleets need to be launched approximately every 3-5 years
- ▶ Breaking into the market with 5 ton cargo lift capacity with full manufacturing capability in place outpaces any other new vehicles being considered

Rendering of Proposed MLS Facility

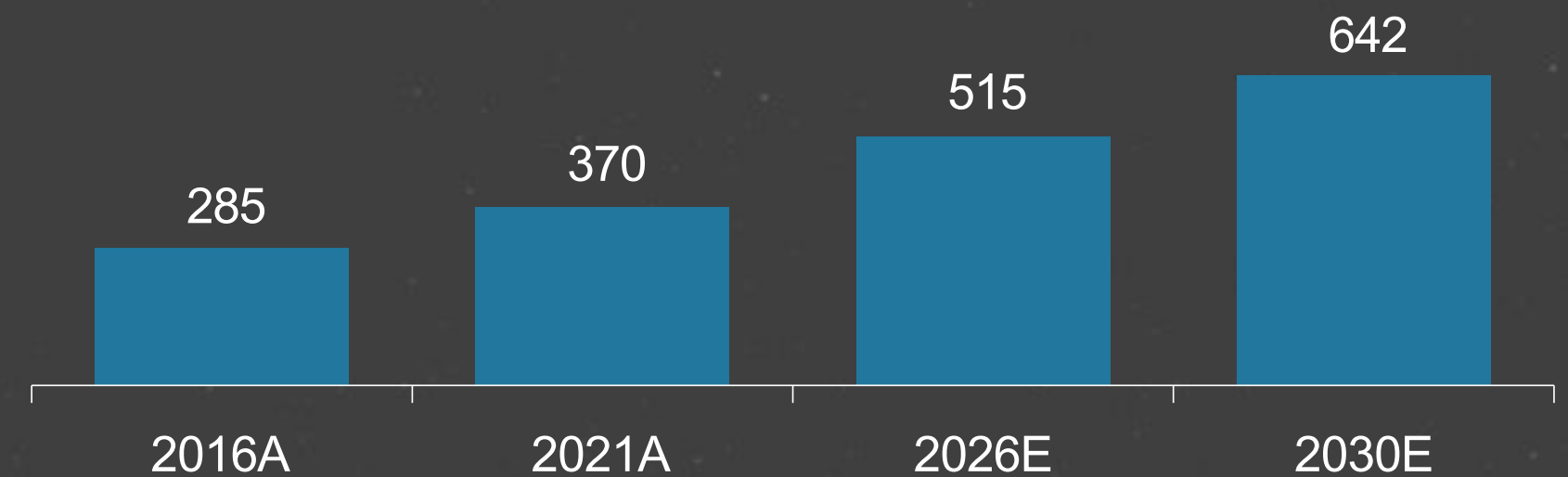


# GLOBAL SPACE ACTIVITY & SATELLITE INDUSTRY TRENDS – EXPANDING RAPIDLY

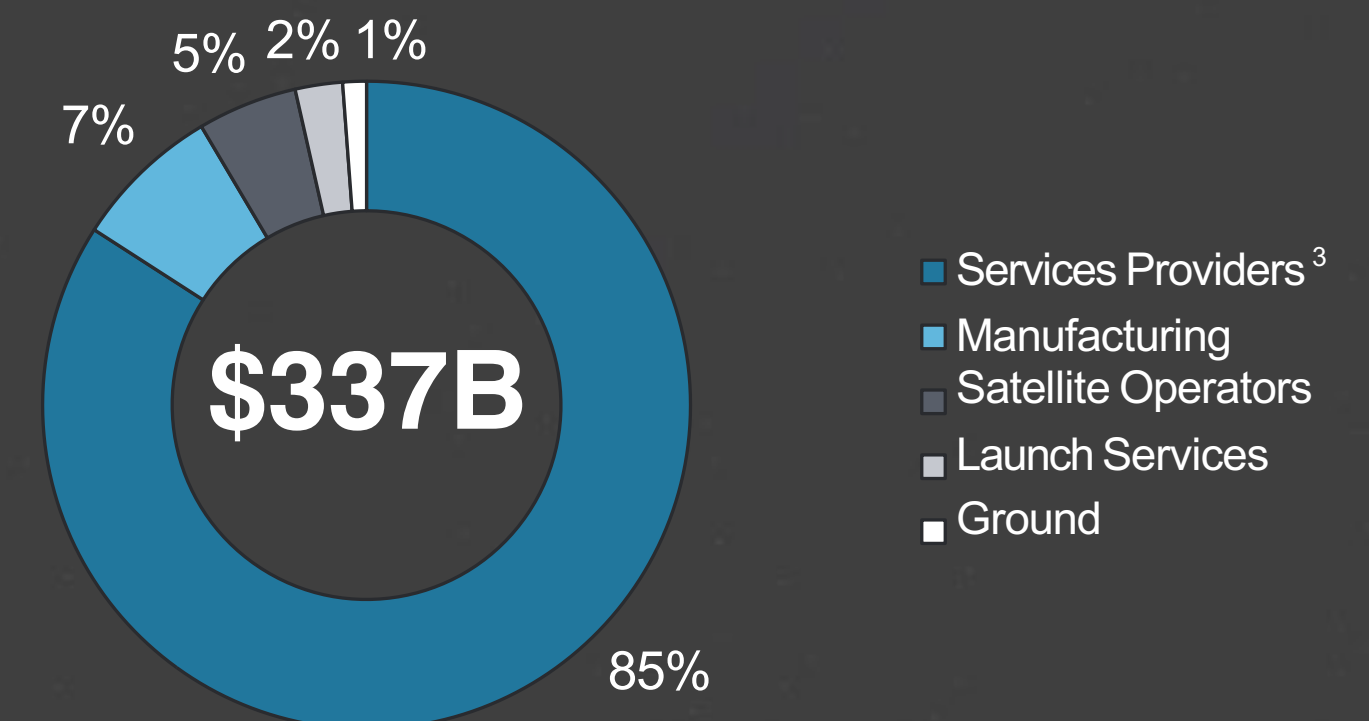
- ▶ Projected to top US\$1+ trillion in revenue within 20 years<sup>1</sup>
- ▶ The launch industry is the backbone for the entire ecosystem
- ▶ Global broadband satellite constellations in LEO, including SSO, require thousands of satellites to build-out their networks
- ▶ Significant expansion in Near Earth Imaging satellite constellations
- ▶ Internet of Things usage and adoption will drive further growth
- ▶ Launch-on-Demand is critical to the constellation market business model to fill gaps in coverage
- ▶ Massive shift from government funding to venture capital, strategic investors and public marketing financings

## Total Space Industry Revenues<sup>2</sup>

(In US\$ billions)



## 2021 Space Market Value Chain<sup>2</sup>





# COMPETITIVE LANDSCAPE

Spaceport Nova Scotia will be the only private commercial range in North America

Launch Site	Private Commercial Range	SSO/Polar	55 Degree Inclined	GTO
Cape Canaveral, FL	No	No	Yes	Yes
Kennedy Space Center, FL	No	No	Yes	Yes
<b>Nova Scotia, Canada</b>	<b>Yes</b>	<b>Yes</b>	<b>Yes</b>	<b>Yes</b>
Vandenberg, CA	No	Yes	No	No
Kodiak Island, AK	No	Yes	No	No
Brownsville, TX	No	No	Yes	Yes

The medium class launch vehicle is proven and primed for the constellation market

Medium Class Launcher	Flight Heritage	In North America	4 Meter Fairing	Max Lift (kg)
Firefly Beta	No	TBD	TBD	TBD
PSLV India	Yes	No	No	1,750
<b>Cyclone 4M</b>	<b>Yes</b>	<b>Yes</b>	<b>Yes</b>	<b>5,000</b>
Soyuz	Yes	No	Yes	7,000
Rocket Lab Neutron	No	TBD	TBD	TBD
Vega	Yes	No	No	3,300
Relativity Teran-1	No	Yes	No	2,755

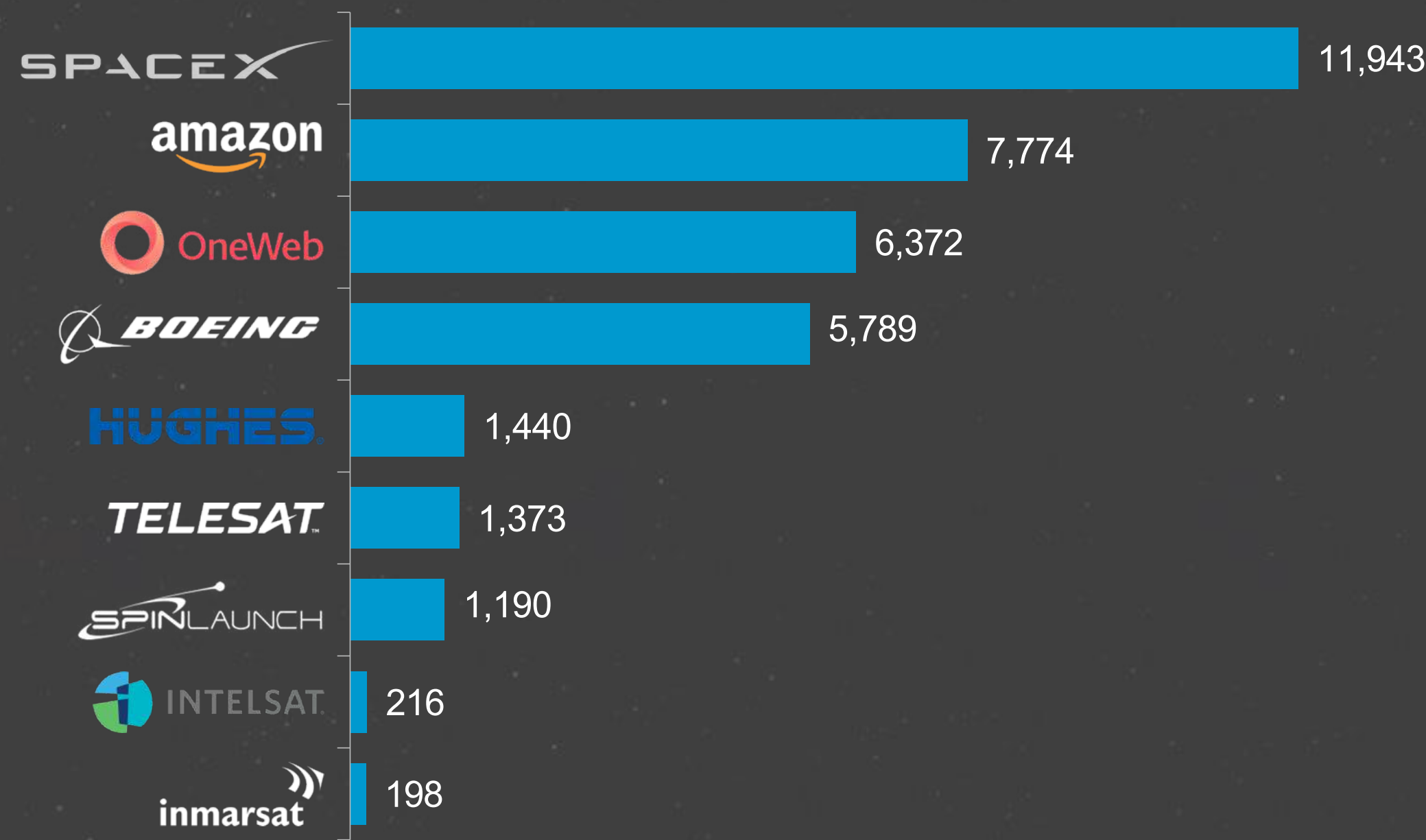


# INSATIABLE DEMAND FOR LEO

New and established firms are bolstering growth and demand as they look to transition to LEO constellations

## Select Satellites in Constellation (New or Expanded)

(# of Satellites)



## Select Ongoing Projects



Currently working toward an initial constellation of 3,236 satellites called Project Kuiper



Received FCC authorization for a constellation of 147 satellites



Currently about halfway through deploying its initial constellation of 648 satellites in orbit





**Direct Mail Inquiries**

303-1883 Upper Water Street,  
Halifax, Nova Scotia  
Canada B3J 1S9

[www.maritimelaunch.com](http://www.maritimelaunch.com)

[info@maritimelaunch.com](mailto:info@maritimelaunch.com)

